

## SCORPION BARCODE VISION APP

### SCOPE

The Scorpion Barcode Vision App reads 1D barcodes using an area camera.

The Scorpion Vision App turns the Smart Camera from Sony into a complete vision solution.

### APP FEATURES

Scorpion Vision Apps define a completely new entry level in Machine Vision designed for Scorpion Vision Integration and Scorpion Vision OEM.

#### COMMON FEATURES FOR SCORPION VISION APPS

- Internet Download
- Internet Upgrade
- Deployment with Scorpion Installer
- Based on proven Scorpion Vision Framework
- Licensed to the camera
- Development with Scorpion SDK
- OEM Development upon request

### SPECIFICATION

The Scorpion Barcode Vision App is easy to use. It has a simple operator screen, and is easy to configure without machine vision knowledge.

The app reads the following 1D barcodes

- EAN8
- EAN13
- Code25
- Code39
- Code128

Features:

- The ROI is user defined
- Configurable IO with RS-232 and TCP/IP
- Camera setup



*The app runs on Smart Cameras from Sony.*

### APPLICATION AREAS

The Vision App is designed to be used in:

- Barcode reading
- Object Traceability

The Vision App is easy to deploy and to get working with the powerful SmartCameras from Sony.



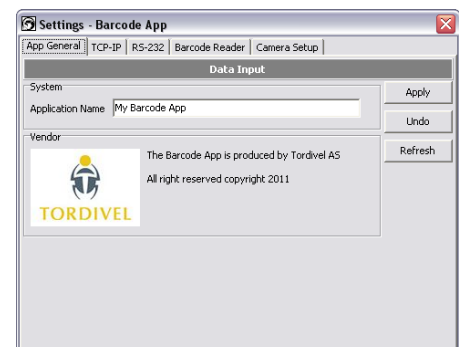
*Scorpion Barcode Vision App User Interface*

### CONFIGURATION

The configuration Settings panels are password protected accessible via the Setup button. The panels are easy to use and understand.

### GENERAL

The Apps General panel gives information about the vendor. The application name can be defined in this panel.



*The App General Settings*

### ♣ Scorpion Vision Products

App Product no.  
SVA-2011-0001-Barcode

## BARCODE READER

This panel defines the setup of the barcode reader. Press the Barcode button to open the Setup panel.

The following codes are supported:

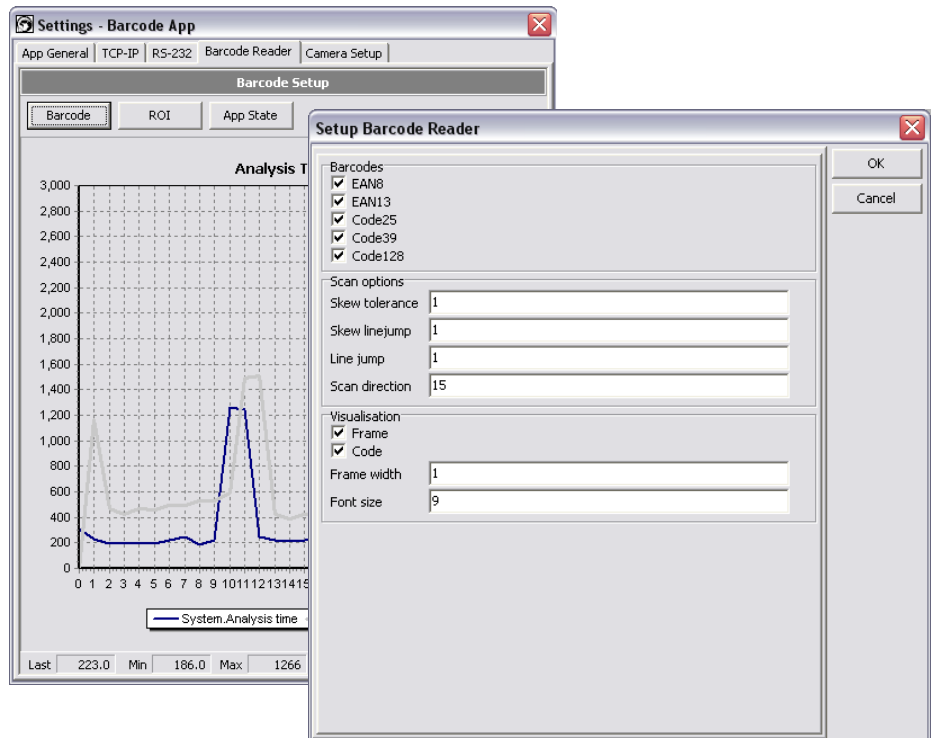
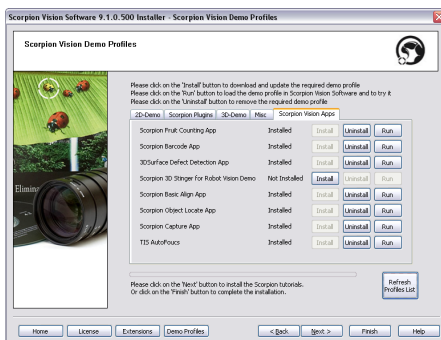
- EAN8
- EAN13
- Code25
- Code39
- Code128

Scan options are available as well as setup for the user interface visualisation.

## SCORPION INSTALLER

The Scorpion Vision Installer manage the Vision Apps installation. The Installer installs first the complete Scorpion Vision Framework and provides tutorials to learn more about Scorpion Vision and Vision Apps.

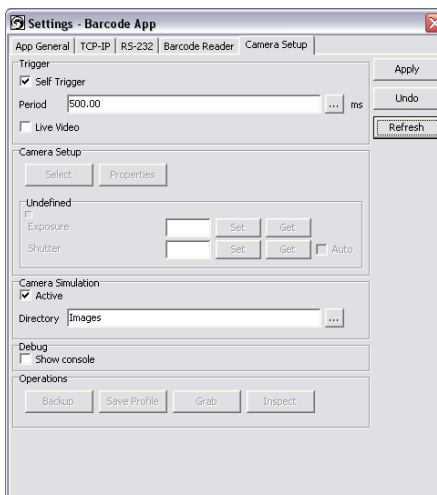
The Scorpion Vision Apps are downloaded, installed and updated from the Scorpion Server over the Internet.



## CAMERA SETUP

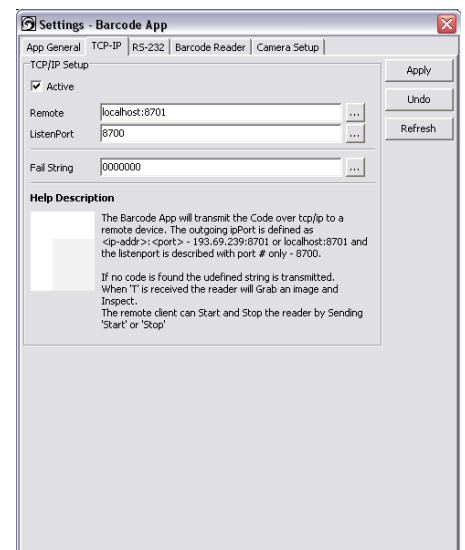
The camera settings are managed over a specific interface for the Smart Camera from Sony. The Scorpion Vision App supports internal, hardware and command based triggering over RS-232 or TCP/IP. Both monochrome and colour images are supported.

To verify the App Setup, offline camera simulation mode is available. All camera properties are managed from the Camera Setup panel.



## TCP/IP OR RS-232

The App transmits the code over RS-232 or/and TCP/IP to any host system. The configuration below shows the options for the TCP/IP connection.



Scorpion Vision Software® is a registered trademark of Tordivel AS.  
 © 2011 Tordivel AS

For more information:



**TORDIVEL**

Tordivel AS  
 Phone +47 2315 8700  
 Fax +47 2315 8701  
 office@tordivel.com  
 www.scorpionvision.com